



# MONTHLY MEMBERSHIP PROGRESS REPORT

District 27 A1

Results as of: 10/31/2015

GMT: Judy Hankom

LOCATION WISCONSIN

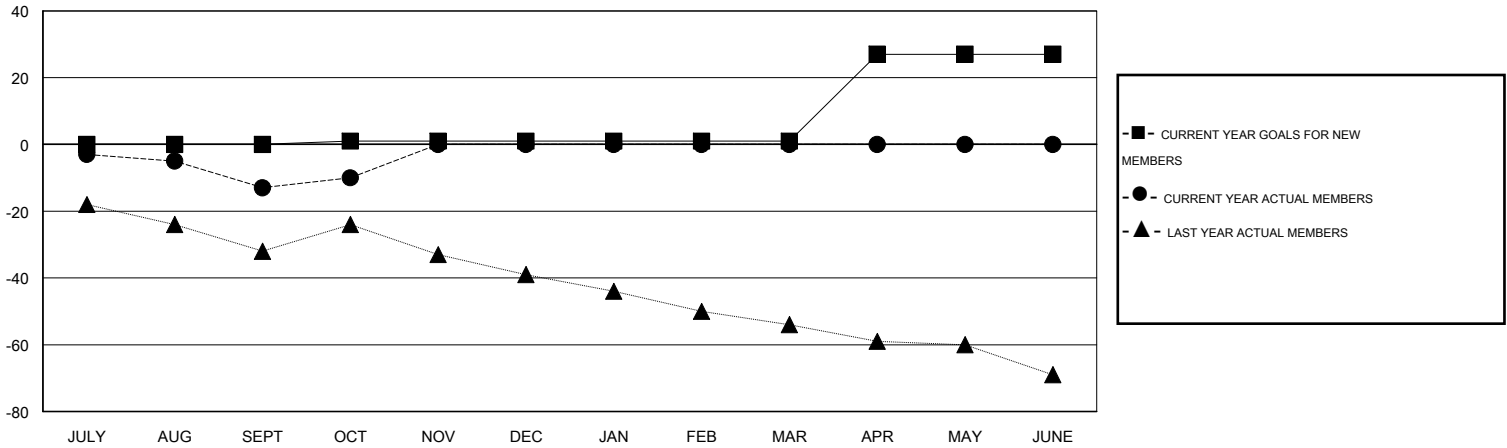
GMT CA 1

Clubs					Members				
RESULTS FOR 2015-2016					RESULTS FOR 2015-2016				
QUARTER	NEW CLUB GOAL	NEW CLUBS	DROPPED CLUBS	NET GAIN/LOSS	QUARTER	NEW MEMBER GOAL	CHARTER AND NEW MEMBERS ADDED	DROPPED MEMBERS	NET GAIN/LOSS
JULY/AUG/SEPT	0	0	0	0	JULY/AUG/SEPT	0	25	38	-13
OCT/NOV/DEC	0	0	0	0	OCT/NOV/DEC	1	20	17	3
JAN/FEB/MAR	0	0	0	0	JAN/FEB/MAR	0	0	0	0
APR/MAY/JUNE	1	0	0	0	APR/MAY/JUNE	26	0	0	0

GOALS AND ACTUAL NEW CLUBS CUMULATIVE



GOALS AND ACTUAL MEMBERS CUMULATIVE



DROPPED CLUBS: 0	23 CLUBS OF 50 ADDED 1 OR MORE NEW MEMBERS	<u>GENDER DISTRIBUTION</u>	
<u>DROPPED MEMBERS</u>		MALE	1,427 (83.06%)
DECEASED	7	FEMALE	291 (16.94%)
CLUB CANCELLED	0	FAMILY UNIT MEMBERS 226 HEAD OF HOUSEHOLD 106 NON-HEAD OF HOUSEHOLD 120	
OTHER	48		
TOTAL	55		
<a href="#">CLICK HERE FOR HEALTH ASSESSMENT DATA</a>			